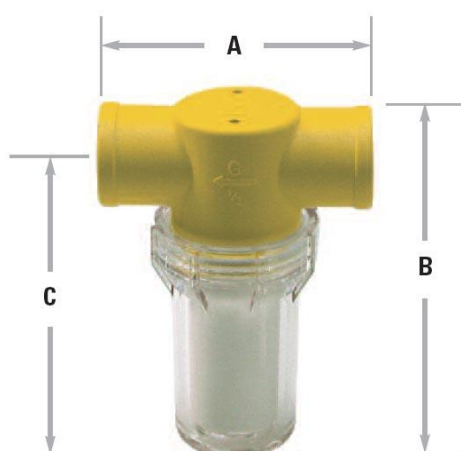


## PA-S small filter

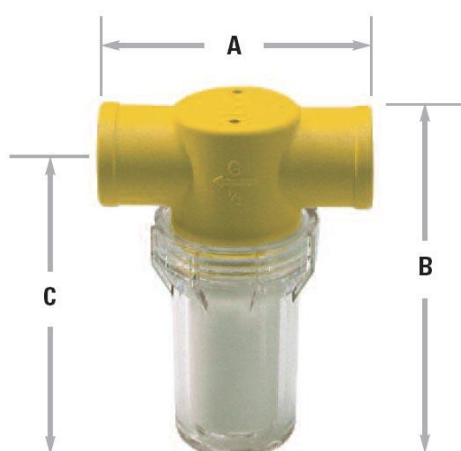


Technical Data		PA-S small filter
		G 1/8"
Bowl material		Polyamid
Head material		Polypropylene
Gasket material		Buna-N
Filter cartridge material	PE	5µm, 35µm or 80µm
Temperature Min./Max.	°C	5 - 50
Maximum pressure	bar	10 bar (at 24°C max.)
Size A	mm	58
Size B	mm	58
Size C	mm	48

Ordering Information	PA-S small filter
PA-S filter with G 1/8" connections	777.000
Wall mounting bracket	777.500
Spare Cartridge set* 5µm (5 p/set)	777.101
Spare Cartridge set* 35µm (5 p/set)	777.201
Spare Cartridge set* 80µm (5 p/set)	777.301

\* incl. Gasket

## PA-M medium filter

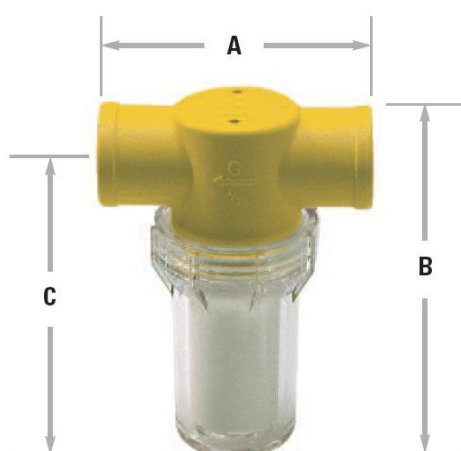


Technical Data		PA-M medium filter		
		G 1/4"	G 3/8"	G 1/2"
Bowl material		Polyamid		
Head material		Polypropylene		
Gasket material		Buna-N		
Filter cartridge material	PE	5µm, 35µm or 80µm		
Temperature Min./Max.	°C	5 - 50		
Maximum pressure	bar	10 bar (at 24°C max.)		
Size A	mm	75,0	75,0	75,0
Size B	mm	94,5	98,5	102,5
Size C	mm	84,5	86,5	88,5

Ordering Information	PA-M medium filter
PA-M filter with G 1/4" connections	777.011
PA-M filter with G 3/8" connections	777.012
PA-M filter with G 1/2" connections	777.013
Wall mounting bracket	777.500
Spare Cartridge set* 5µm (5 p/set)	777.111
Spare Cartridge set* 35µm (5 p/set)	777.211
Spare Cartridge set* 80µm (5 p/set)	777.311

\* incl. Gasket

## PA-L large filter

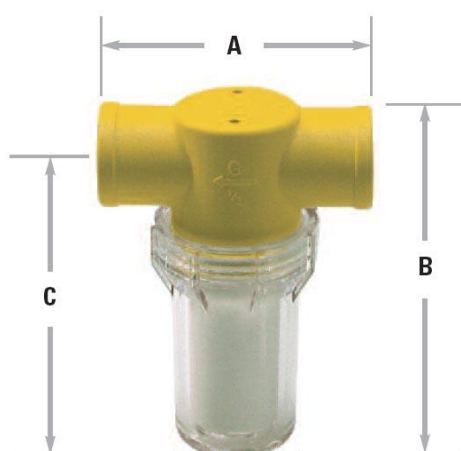


Technical Data		PA-L large filter	
		G 1/2"	G 3/4"
Bowl material		Polyamid	
Head material		Polypropylene	
Gasket material		Buna-N	
Filter cartridge material	PE	5µm, 35µm or 80µm	
Temperature Min./Max.	°C	5 - 50	
Maximum pressure	bar	10 bar (at 24°C max.)	
Size A	mm	90,5	90,5
Size B	mm	129,0	134,0
Size C	mm	115,0	118,0

Ordering Information	PA-L large filter
PA-L filter with G 1/2" connections	777.021
PA-L filter with G 3/4" connections	777.022
Wall mounting bracket	777.501
Spare Cartridge set* 5µm (5 p/set)	777.121
Spare Cartridge set* 35µm (5 p/set)	777.221
Spare Cartridge set* 80µm (5 p/set)	777.321

\* incl. Gasket

## PA-filter with manometer



Technical Data		PA-filter with manometer	
		G 3/8"	G 1/2"
Bowl material		Polyamid	
Head material		Polypropylene	
Gasket material		Buna-N	
Filter cartridge material	PE	5µm, 35µm or 80µm	
Temperature Min./Max.	°C	5 - 50	
Maximum pressure		atm.	
Size A	mm	75,0	90,5
Size B without manometer	mm	98,5	129,0
Size C	mm	86,5	115,0

Ordering Information	PA-filter with manometer	
	G 3/8"	G 1/2"
PA-manometer with G 3/8"	777.062	
PA-manometer with G 1/2"	777.071	
Wall mounting bracket	777.500	777.501
Spare Cartridge set* 5µm (5 p/set)	777.111	777.121
Spare Cartridge set* 35µm (5 p/set)	777.211	777.221
Spare Cartridge set* 80µm (5 p/set)	777.311	777.321

\* incl. Gasket

# Inlet Dust Filters

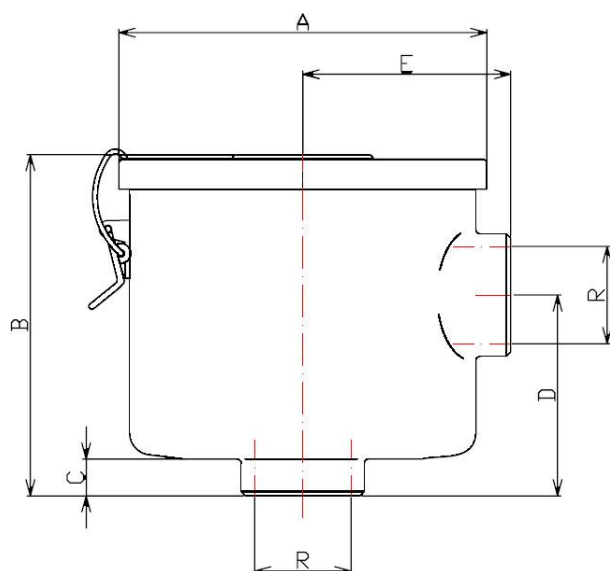


These dust filters can be mounted on the intake side of the vacuum pumps to protect the pump against: dust, powders, chips, etc.

The filters consists of a steel housing with a lit and quick locking clamps.

Quick changing of cartridges is possible and the filters have a high separation ratio.

The housings are suitable to be fitted with four different kind of filters:



Type	Dimensions in mm						Weight kg
	øR	øA	B	C	D	E	
02.800	G ½"	80	60	12	39	45	0,56
20.800	G 1¼"	170	141	17	93	96	1,75
50.800	G 2"	200	240	18	124	114	3,80
120.800	G 3"	270	180	50	145	165	12,50

## Paper cartridge

Separates particles down to 1 µm. Specially suitable for dry processes. We use this filter as standard.

## Polyester cartridge

Separates particles down to 1 µm. Specially suitable for moist processes.

## Metal cartridge

Separates particles down to 0,08 mm, like pieces of: plastic, paper, food, etc

## Activated charcoal cartridge

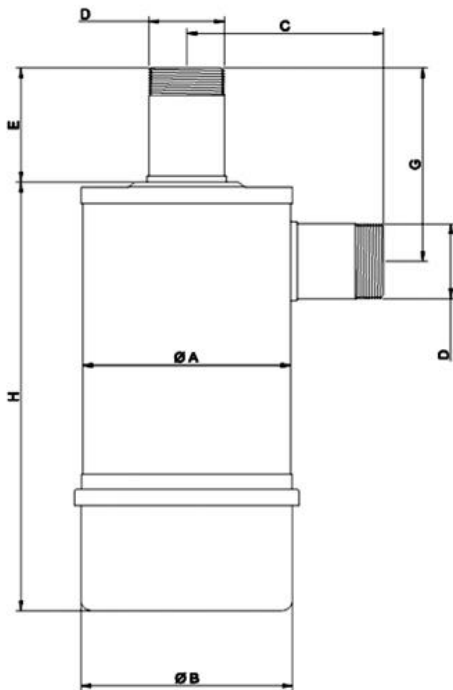
Absorbs vapours of high molecular weight, like: acid and solvent vapours, alkaline solutions, etc.

Dust Filter	Housing with paper cartridge	Paper cartridge	Polyester cartridge	Metal cartridge	Activated charcoal cartridge
G ½"	02.800	02.8001	02.8101	02.8201	02.8301
G 1¼"	20.800	20.8001	20.8101	20.8201	20.8301
G 2"	50.800	50.8001	50.8101	50.8201	50.8301
G 3"	120.800	120.8001	120.8101	120.8201	120.8301

# Large Quantity Dust Filters



Eurovacuum Large Quantity Filters are two stage filter in compact design. They are suitable for heavy duty applications, for example: earth moving machines, street working machines, building trucks, agricultural machines, etc. The filters can be mounted horizontal and vertical. The high quality of the paint and manufacturing technologies allows the housing to resist the worse environmental conditions. Temperature for working at continuous use are -40°C till +100°C.



Dimensions	A	B	C	D	E	G	H
LQ-filter G 1¼"	132	146	126	G 1¼"	81	129	312
LQ-filter G 1½"	132	146	126	G 1½"	81	129	312
LQ-filter G 2"	165	178	156	G 2"	91	144	341
LQ-filter G 3"	203	220	157	G 3"	102	172	453
LQ-filter G 4"	262	276	225	G 4"	128	208	493

## Large Quantity Dust Filters

Technical Data		LQ-filters
Available flange sizes	G(BSP)	1¼" - 1½" - 2" - 3" & 4"
Pressure difference	mbar	Δ15
Admissible ambient temp.	°C	-40 to +100
Flow rate max.		
- G 1¼"	m <sup>3</sup> /h	120
- G 1½"	m <sup>3</sup> /h	170
- G 2"	m <sup>3</sup> /h	240
- G 3"	m <sup>3</sup> /h	440
- G 4"	m <sup>3</sup> /h	730

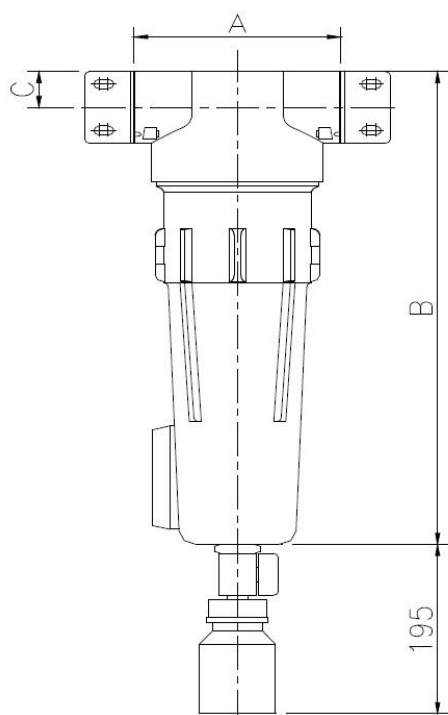
Ordering Information	LQ-filters
LQ-dust filter G 1¼"	777.702
LQ-dust filter G 1½"	777.703
LQ-dust filter G 2"	777.704
LQ-dust filter G 3"	777.705
LQ-dust filter G 4"	777.706
Spare cartridge LQ-filter G 1¼"	777.712
Spare cartridge LQ-filter G 1½"	777.713
Spare cartridge LQ-filter G 2"	777.714
Spare cartridge LQ-filter G 3"	777.715
Spare cartridge LQ-filter G 4"	777.716
Wall mounting bracket LQ-filter G 1¼"	777.722
Wall mounting bracket LQ-filter G 1½"	777.723
Wall mounting bracket LQ-filter G 2"	777.724
Wall mounting bracket LQ-filter G 3"	777.725
Wall mounting bracket LQ-filter G 4"	777.726

# Bacterial Medical Filters



Eurovacuum Bacterial Medical Filters are commonly used in Medical applications to protect the suctions side of the vacuum pumps from exposure to bacterial contamination and therefore protect the external environment from this contamination. The filters capture aerosols and particulate from intake fluids. The filter elements and housings are designed for medical use and can be utilized in hospitals, pharmaceutical laboratories, dentist's surgery and other critical areas. Standard test methods have proven that our filter elements have an efficiency of 99,9998% when tested to BS 3928.

The filters are made of a filter element, an anodized and coated paint finish housing and a transparent drain glass. High efficiency filter elements ensure long service life and low pressure drops thanks to the plated media. It is essential to ensure that the filter assembly is mounted correctly, with the air flow passing through the cartridge from outside to inside and the flask at the bottom. The flask should be visually checked daily and removed for cleaning and sanitization. The filter element must be substituted at least every 6 months or when the pressure drop achieved the value of 0,5 bar.



Dimensions in mm	A	B	C
Bacterial filter G 1/2"	93	263	20
Bacterial filter G 3/4"	125	285	30
Bacterial filter G 1"	125	385	30
Bacterial filter G 1 1/4"	160	405	38
Bacterial filter G 1 1/2"	160	505	38
Bacterial filter G 2"	190	537	52
Bacterial filter G 2 1/2"	190	637	52



## Bacterial Medical Filters

Technical Data		Bacterial Medical filters
Available flange sizes	G(BSP)	1/2" - 3/4" - 1" - 1 1/4" - 1 1/2" - 2" - 2 1/2"
Pressure difference	mbar	Δ30
Admissible ambient temp.	°C	+1 to +60
Working pressure min./max.	mbar	4 mbar / 2000 mbar(abs)
Flow rate at atm.		
- G 1/2"	Nm <sup>3</sup> /h	15
- G 3/4"	Nm <sup>3</sup> /h	25
- G 1"	Nm <sup>3</sup> /h	40
- G 1 1/4"	Nm <sup>3</sup> /h	85
- G 1 1/2"	Nm <sup>3</sup> /h	110
- G 2"	Nm <sup>3</sup> /h	170
- G 2 1/2"	Nm <sup>3</sup> /h	192
Correction factor Flow rate		
- Atm.		x1
- 500 mbar (abs.)		x2
- 250 mbar (abs.)		x4
- 160 mbar (abs.)		x6
- 120 mbar (abs.)		x8
- 90 mbar (abs.)		x10

Ordering Information	Bacterial Medical filters
Bacterial filter G 1/2"	777.801
Bacterial filter G 3/4"	777.802
Bacterial filter G 1"	777.803
Bacterial filter G 1 1/4"	777.804
Bacterial filter G 1 1/2"	777.805
Bacterial filter G 2"	777.806
Bacterial filter G 2 1/2"	777.807
Spare cartridge Bacterial filter G 1/2"	777.821
Spare cartridge Bacterial filter G 3/4"	777.822
Spare cartridge Bacterial filter G 1"	777.823
Spare cartridge Bacterial filter G 1 1/4"	777.824
Spare cartridge Bacterial filter G 1 1/2"	777.825
Spare cartridge Bacterial filter G 2"	777.826
Spare cartridge Bacterial filter G 2 1/2"	777.827
Pressure Gauge for Bacterial filter	777.810
Spare Glass Condensation Collector	777.811

## Condensation traps



Technical Data		Condensation traps		
		G 3/8"	G 1/2"	G 3/4"
Housing material		Polypropylene		
Gasket material		Buna-N		
Temperature Min./Max.	°C	5 - 50		
Maximum pressure		atm.		
Connection flanges	G(BSP)	3/8"	1/2"	3/4"
Drain connection	G(BSP)	1/2"	1/2"	1/2"

Ordering Information	Condensation traps
Condensation trap with G 3/8"	777.900
Condensation trap with G 1/2"	777.901
Condensation trap with G 3/4"	777.902
Drain valve	777.910
Wall mounting bracket	777.911

# Fore-line Filters

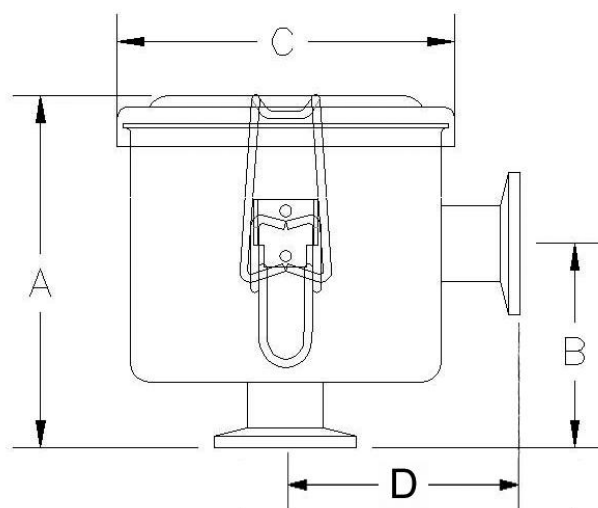


These dust filters can be mounted on the intake side of Double Stage Rotary Vane, Piston or Scroll vacuum pumps to protect the pump against particles, to protect the system against Oil mist from the vacuum pump or to trap condensable vapors.

The filters consists of a zinc plate steel housing with a lid and quick locking clamps.

Quick changing of cartridges is possible and the filters have a high separation ratio.

Typical vacuum level for the filters:  $1 \cdot 10^{-3}$  mbar



Housing & polyester cart.	Dimensions in mm					Weight kg
	Flange	A	B	ØC	D	
778.016	KF16	99	58	95	67	0,4
778.025	KF25	111	70	146	86	1
778.040	KF40	111	70	146	86	1
778.063	ISO63	292	165	195	155	7
778.100	ISO100	411	232	337	237	15

## Polyester cartridge

Separates particles down to 5 µm. Suitable for dry and moist processes. We use this filter as standard.

## Activated Alumina cartridge

Prevention against back-streaming and traps water and acid vapors.

## Activated Charcoal cartridge

Granulate filled cartridges provides greatest capacity to absorb gas or vapor odors.

## Metal Wire Mess cartridge

Corrosive resistant material with large surface area, traps condensable particles and oil vapors.

Replacement cartridges	Polyester cartridge	Activated Alumina cartridge	Activated Charcoal cartridge	Metal Wire Mess cartridge
KF16	778.0161	778.0162	778.0163	778.0164
KF25	778.0251	778.0252	778.0253	778.0254
KF40	778.0401	778.0402	778.0403	778.0404
ISO63	778.0631	778.0632	778.0633	778.0634
ISO100	778.1001	778.1002	778.1003	778.1004