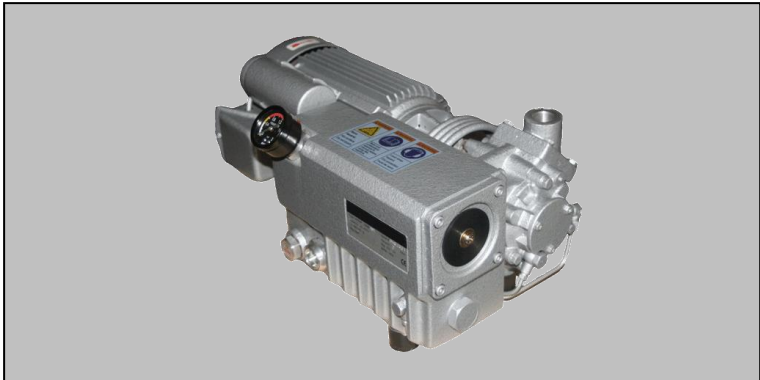
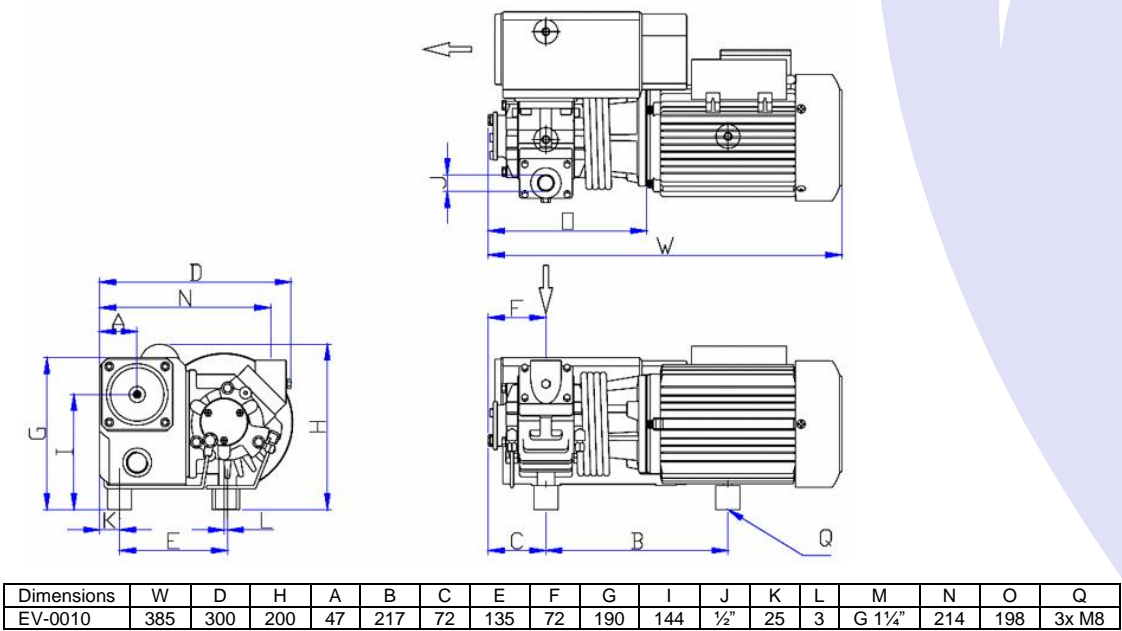
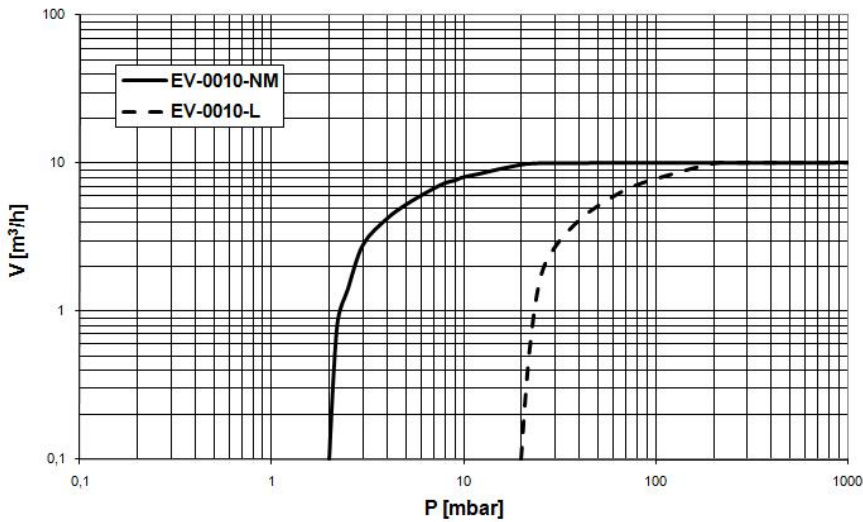


TYPE EV-0010



Pumping speed curve



TYPE EV-0010

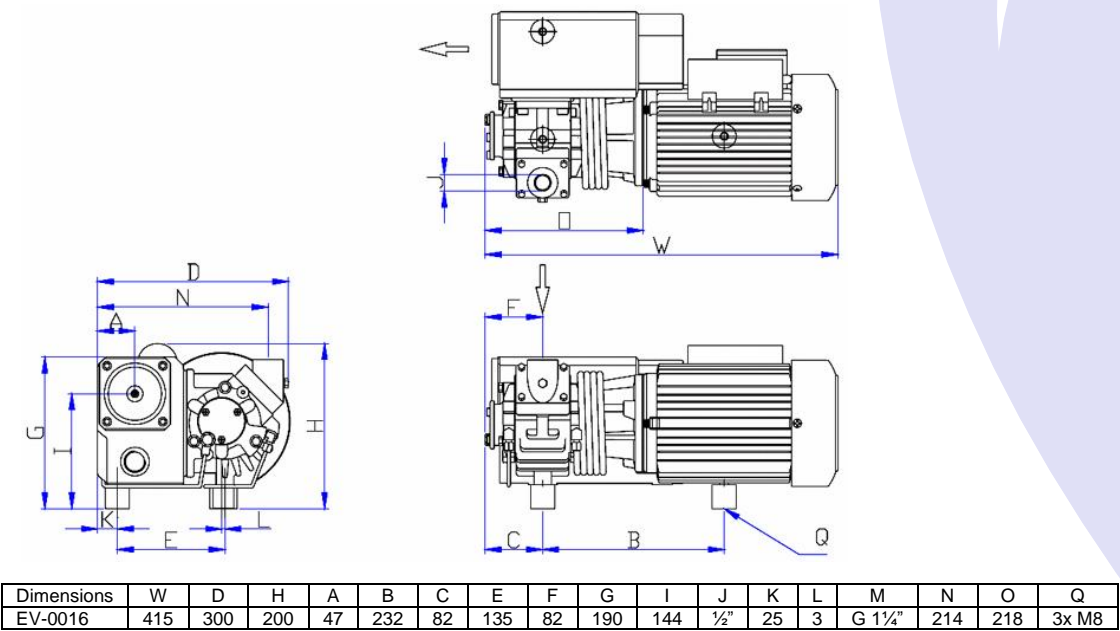
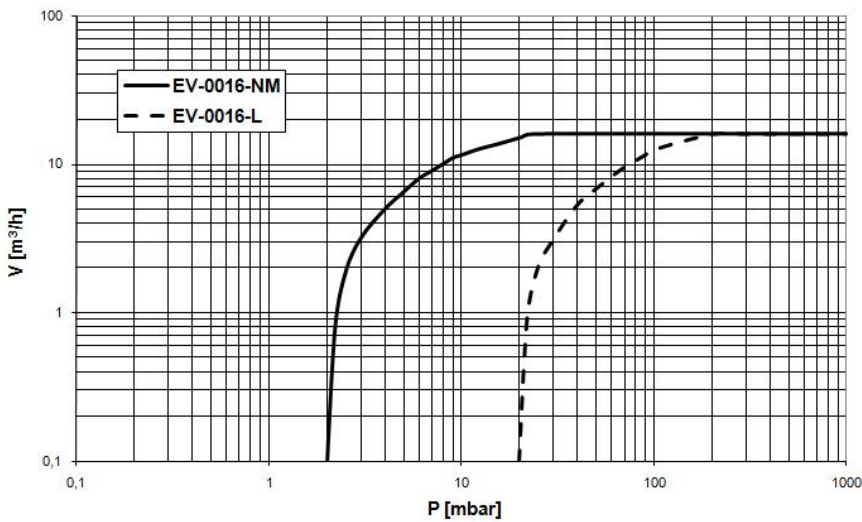
Technical Data		TYPE EV-0010	
		50 Hz	60 Hz
Nominal displacement	m ³ /h	10	12
Ultimate pressure NM type	mbar	2	2
L type	mbar	20	20
Motor power	kW	0,4	0,4
Nominal speed	rpm	1450	1740
Noise level	dB(A)	57	59
Operating temperature	°C	77	77
Oil capacity	ltr	0,5	0,5
Weight	kg	20	20
Admissible ambient temp.	°C	10 to 40	10 to 40
Connection Inlet	G(BSP)	½"	½"
Outlet	G(BSP)	1¼"	1¼"

Ordering Information		TYPE EV-0010	
		50 Hz	60 Hz
<u>NM version (2 mbar)</u>			
Single phase motor			
230V, 50/60 Hz (IEC)		101.100	101.100
Three phase motor			
400V, 50Hz (IEC)		101.101	
400V, 60Hz (IEC)			101.102
<u>L version (20 mbar)</u>			
Single phase motor			
230V, 50/60 Hz (IEC)		101.200	101.200
Three phase motor			
400V, 50Hz (IEC)		101.201	
400V, 60Hz (IEC)			101.202
Other Voltages/Frequencies		Upon request	
Filling with special oil		Upon request	
Exhaust filter cartridge		02120A	
Gasket set		02490	
Maintenance kit		02500	
Pump module		02900	
Inlet dust filter, paper cartridge		02800	

TYPE EV-0016



Pumping speed curve



TYPE EV-0016

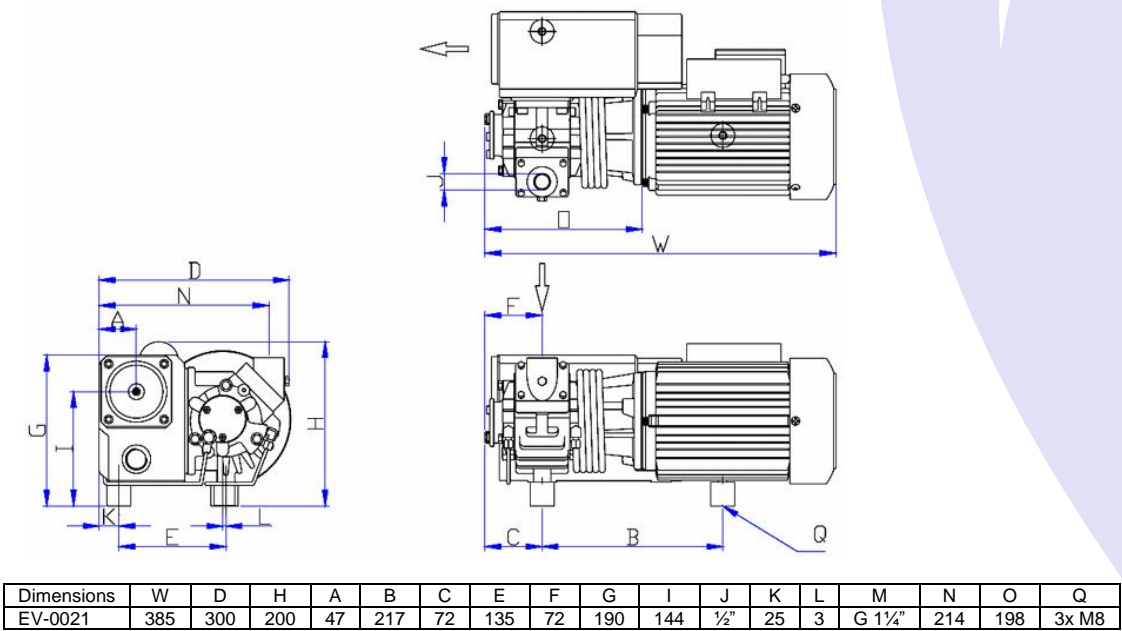
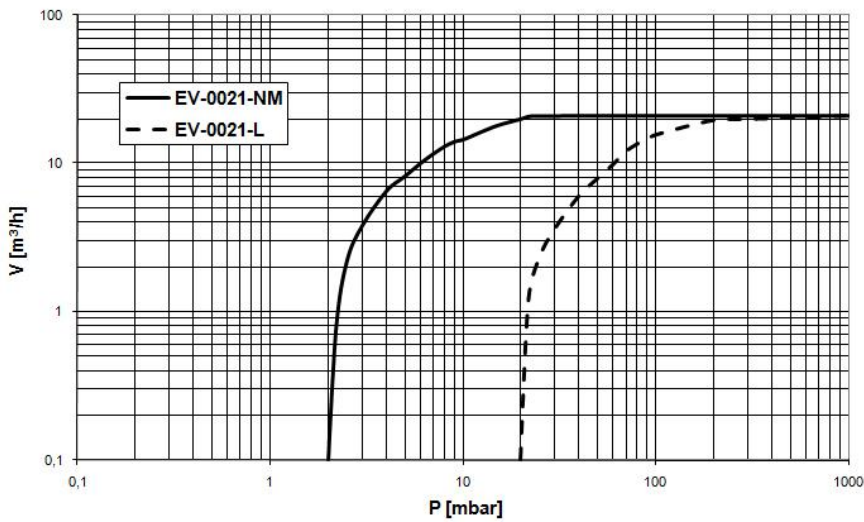
Technical Data		TYPE EV-0016	
		50 Hz	60 Hz
Nominal displacement	m ³ /h	16	19
Ultimate pressure NM type	mbar	2	2
L type	mbar	20	20
Motor power	kW	0,75	0,75
Nominal speed	rpm	1450	1740
Noise level	dB(A)	58	60
Operating temperature	°C	80	80
Oil capacity	ltr	0,5	0,5
Weight	kg	22	22
Admissible ambient temp.	°C	10 to 40	10 to 40
Connection Inlet	G(BSP)	½"	½"
Outlet	G(BSP)	1¼"	1¼"

Ordering Information		TYPE EV-0016	
		50 Hz	60 Hz
<u>NM version (2 mbar)</u>			
Single phase motor			
230V, 50/60 Hz (IEC)		102.100	102.100
Three phase motor			
400V, 50Hz (IEC)		102.101	
400V, 60Hz (IEC)			102.102
<u>L version (20 mbar)</u>			
Single phase motor			
230V, 50/60 Hz (IEC)		102.200	102.200
Three phase motor			
400V, 50Hz (IEC)		102.201	
400V, 60Hz (IEC)			102.202
Other Voltages/Frequencies		Upon request	
Filling with special oil		Upon request	
Exhaust filter cartridge		02120A	
Gasket set		02490	
Maintenance kit		02500	
Pump module		02900	
Inlet dust filter, paper cartridge		02800	

TYPE EV-0021



Pumping speed curve



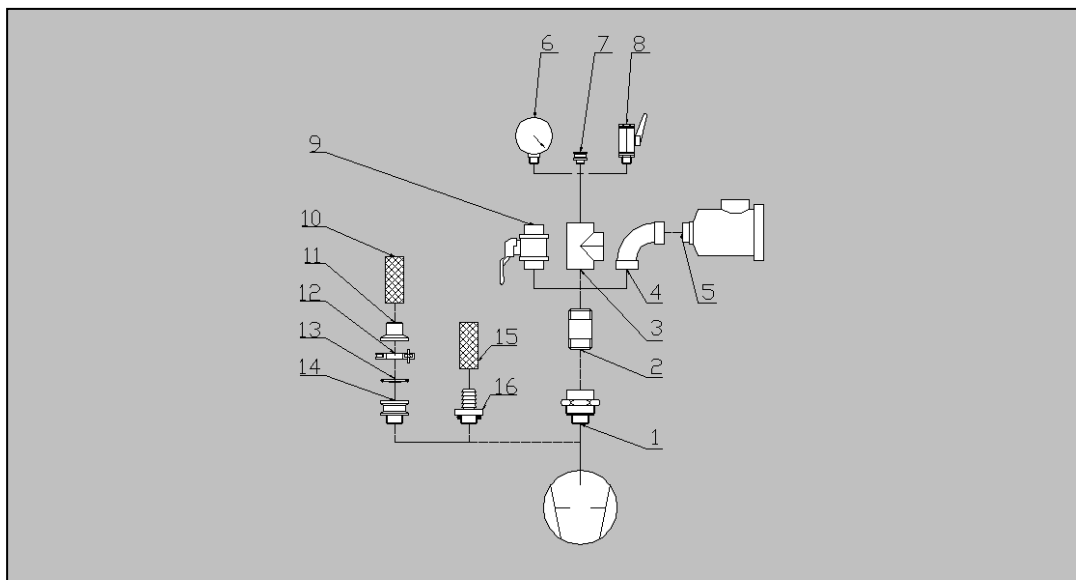
TYPE EV-0021

Technical Data		TYPE EV-0021	
		50 Hz	60 Hz
Nominal displacement	m ³ /h	20	24
Ultimate pressure NM type	mbar	2	2
L type	mbar	20	20
Motor power	kW	0,9	0,9
Nominal speed	rpm	2870	3480
Noise level	dB(A)	60	62
Operating temperature	°C	85	85
Oil capacity	ltr	0,5	0,5
Weight	kg	20	20
Admissible ambient temp.	°C	10 to 40	10 to 40
Connection Inlet	G(BSP)	½"	½"
Outlet	G(BSP)	1¼"	1¼"

Ordering Information		TYPE EV-0021	
		50 Hz	60 Hz
<u>NM version (2 mbar)</u>			
Single phase motor			
230V, 50/60 Hz (IEC)		103.100	103.100
Three phase motor			
400V, 50Hz (IEC)		103.101	
400V, 60Hz (IEC)			103.102
<u>L version (20 mbar)</u>			
Single phase motor			
230V, 50/60 Hz (IEC)		103.200	103.200
Three phase motor			
400V, 50Hz (IEC)		103.201	
400V, 60Hz (IEC)			103.202
Other Voltages/Frequencies		Upon request	
Filling with special oil		Upon request	
Exhaust filter cartridge		02120A	
Gasket set		02490	
Maintenance kit		02500	
Pump module		02900	
Inlet dust filter, paper cartridge		02800	

EV Series accessories

Connection fittings for EV-0010, EV-0016, EV-0021



Item	Description	Connection	Ordering No.
1	Rotatable flange	½"M-½"F	119.001
2	Adapter piece	½"M-½"M	119.002
	Adapter piece (40mm long)	½"M-½"M	119.020
	Adapter piece (80mm long)	½"M-½"M	119.021
	Adapter piece (120mm long)	½"M-½"M	119.022
3	T-piece	½"F-½"F-½"F	119.003
4	Elbow (short)	½"F-½"F	119.004
	Elbow (long)	½"F-½"F	119.018
5	Inlet dust filter, paper cartridge	½"F-½"F	02.800
6	Manometer 0 to -1 bar	½"M	119.006
7	KF Adapter	½"M-DN16KF	211.367
8	Ball valve	½"M-½"F	119.007
9	Ball valve	½"F-½"F	119.008
10	Flexible hose	16mm	119.009
11	Hose connection	DN16KF-16mm	211.402
12	Clamping ring	DN16KF	211.001
13	Centering ring	DN16KF	211.059
14	KF Adapter	½"M-DN16KF	211.367
15	Flexible hose	12mm	119.010
16	Hose connection	½"M-12mm	119.011

EV Inlet Dust Filters

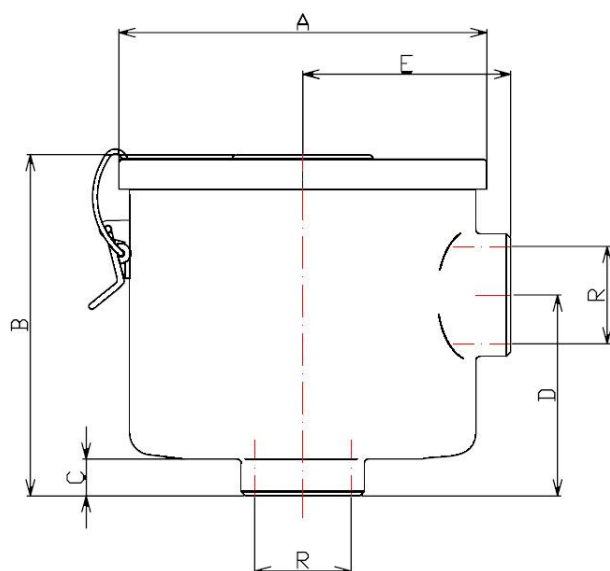


These dust filters can be mounted on the intake side of the EV-Series vacuum pumps to protect the pump against: dust, powders, chips, etc.

The filters consists of a steel housing with a lit and quick locking clamps.

Quick changing of cartridges is possible and the filters have a high separation ratio.

The housings are suitable to be fitted with four different kind of filters:



Type	Dimensions in mm						Weight kg
	øR	øA	B	C	D	E	
02.800	G ½"	80	60	12	39	45	0,6
20.800	G 1¼"	170	141	17	93	96	1,8
50.800	G 2"	200	240	18	124	114	3,8
120.800	G 3"	270	180	50	145	165	12,5

Paper cartridge

Separates particles down to 1 µm. Specially suitable for dry processes. We use this filter as standard.

Polyester cartridge

Separates particles down to 1 µm. Specially suitable for moist processes.

Metal cartridge

Separates particles down to 0,08 mm, like pieces of: plastic, paper, food, etc

Activated charcoal cartridge

Absorbs vapours of high molecular weight, like: acid and solvent vapours, alkaline solutions, etc.

Dust Filter	Housing with paper cartridge	Paper cartridge	Polyester cartridge	Metal cartridge	Activated charcoal cartridge
G ½"	02.800	02.8001	02.8101	02.8201	02.8301
G 1¼"	20.800	20.8001	20.8101	20.8201	20.8301
G 2"	50.800	50.8001	50.8101	50.8201	50.8301
G 3"	120.800	120.8001	120.8101	120.8201	120.8301

Vacuum Gauge with memory

EV Vacuum Gauge with memory



Supplied items

System comes in box

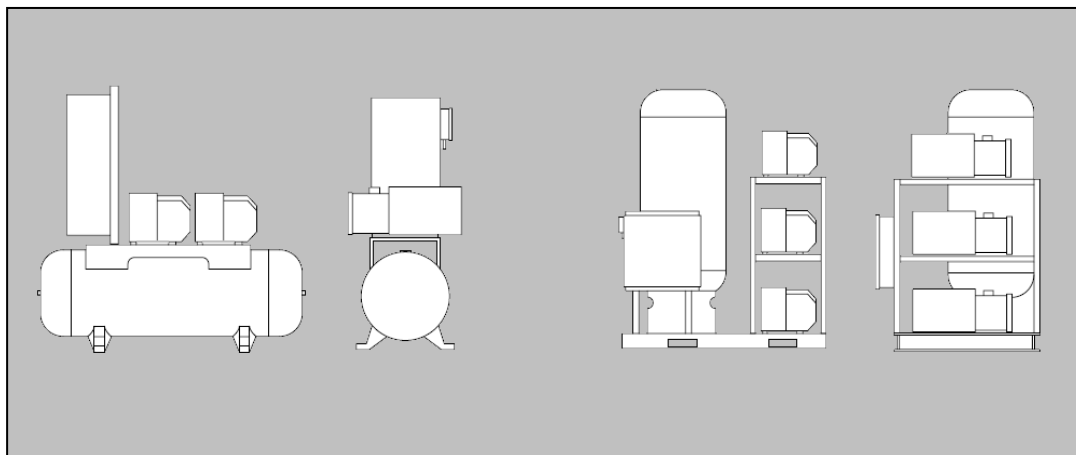
The EV Vacuum Gauge with memory solves many problems of vacuum measurements in the production factories and laboratories. The Gauge can be packed inside film or bag of thermoforming and vacuum chamber machines during daily production. It doesn't require stop of production during measurement and allow to verify the well-closing bags and others, thanks to "test" function which measures 99 different vacuum measurements, choosing from 1 to 59 minutes are possible. It stores the values inside its memory and it is possible to read this memory via the USB cable to your computer by using our available software.

Technical Data		Vacuum Gauge with memory	
		1000 to 1 mbar	100 to 0,1 mbar
Dimensions	mm	120x65x25	
Display		4 digit LCD	
Weight	gram	about 300	
Measurement range	mbar	1.000 till 1	100 till 0,1
Max. pressure (failure point)	bar	2	
Temperature	°C	5 to 50	
Accuracy	mbar	± 1	± 0,1
Charge voltage		230 V AC / USB / 5V	
Battery working time		30 hours (rechargeable)	
Application		air and non corrosive gas	
Protection		IP 65	

Ordering Information		Vacuum Gauge with memory	
		1000 to 1 mbar	100 to 0,1 mbar
Complete set of gauge in box		119.900	119.901
Software for computer memory readout		119.902	
16 KF flange to fit the gauge		119.903	

EV Central Vacuum Systems

EV Central Vacuum Systems for use in factories and hospitals



Double system, 2 pumps

Double systems are commonly used in the Industry and offer the advantage of supplying a continuous vacuum more economical than a number of small vacuum units. It also compensates large vacuum variations in the number of vacuum consumers.

Triple system, 3 pumps

Triple systems are commonly used in hospitals and offer the same advantages as the double system. The third pump also offers an extra safety factor for when one of the pumps is switched off by an error or for service purpose. This way there is always a vacuum present, systems are according to DIN EN 737-3

We also have Single systems, 1 pump, available for small systems that need a buffer tank.

At request we will design a special system that meet your requirements.

The following extra options are available from us:

- Dust filters
- Bacterial filters and residue condensate traps
- Pneumatic or electromagnetic blocking valves
- Mobile systems build on wheels
- Stainless steel buffer tank
- Stainless steel piping
- Connections to buildings central control room

The systems are supplied as full assembled and tested, so they are Plug & Play. On your request we can also offer onsite installation and take care of removing your old system when needed.