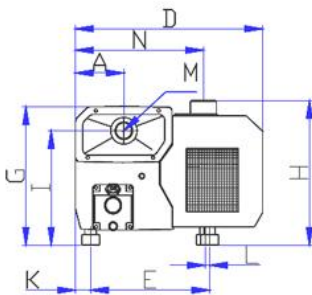
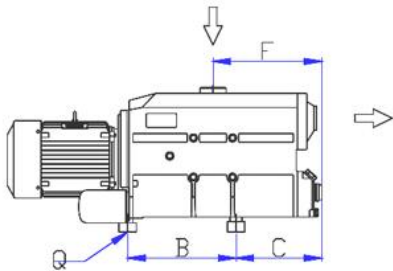
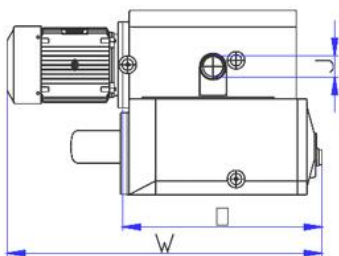
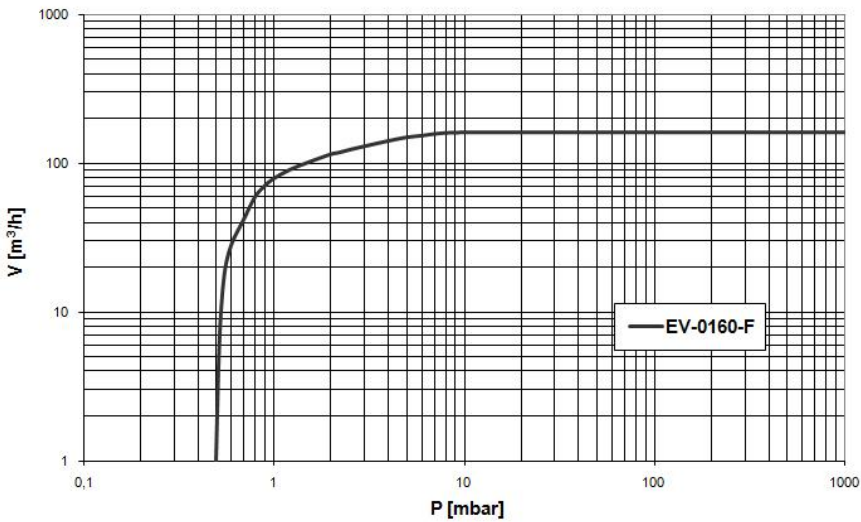


TYPE EV-0160



Pumping speed curve



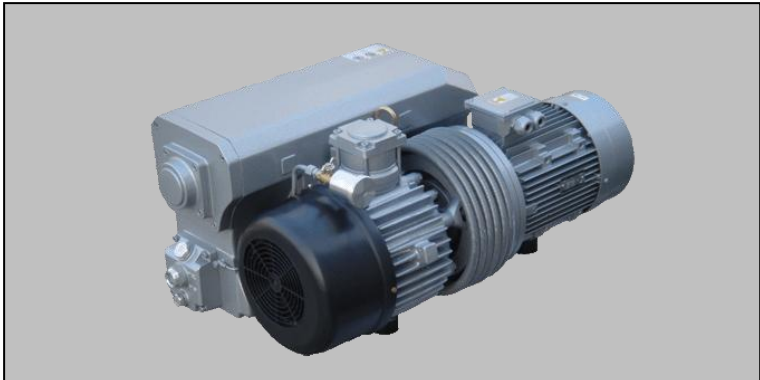
Dimensions	W	D	H	A	B	C	E	F	G	I	J	K	L	M	N	O	Q
EV-0160	895	535	413	138	304	245	340	311	395	325	G 2"	43	12	G 1¼"	365	570	3x M10

TYPE EV-0160

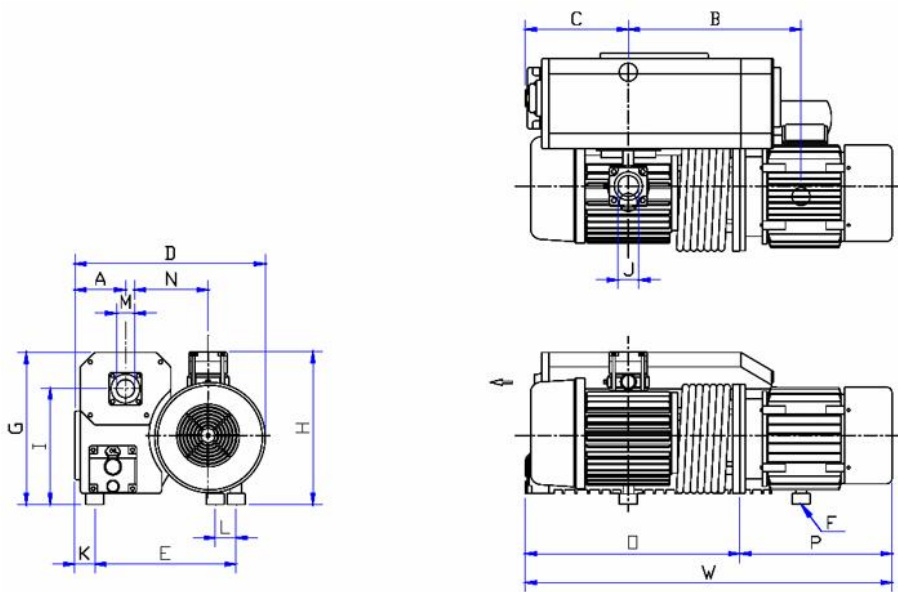
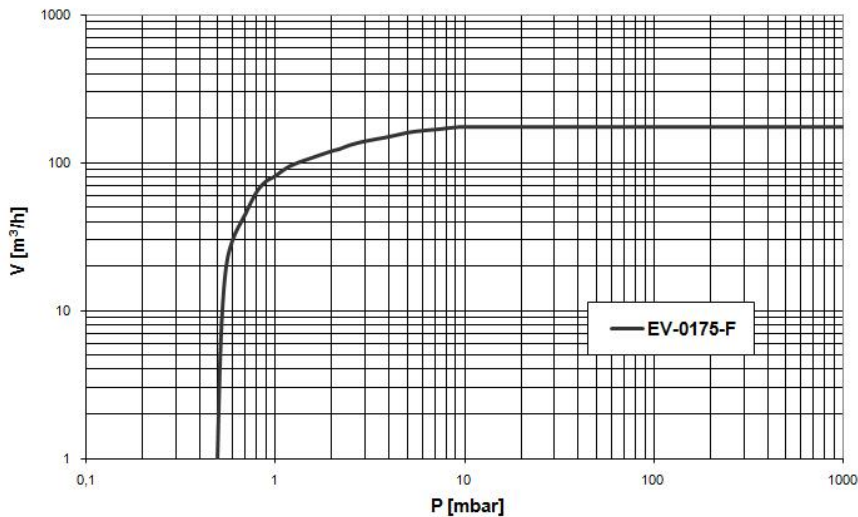
Technical Data		TYPE EV-0160	
		50 Hz	60 Hz
Nominal displacement	m ³ /h	160	192
Ultimate pressure F type	mbar	< 0,5	< 0,5
Motor power	kW	3,7	3,7
Nominal speed	rpm	1450	1740
Noise level	dB(A)	72	75
Operating temperature	°C	85	85
Water vapor tolerance	mbar	40	40
Water vapor capacity	l/h	3,0	3,6
Oil capacity	ltr	7	7
Weight	kg	124	124
Admissible ambient temp.	°C	10 to 40	10 to 40
Connection Inlet	G(BSP)	2"	2"
Outlet	G(BSP)	1½"	1½ "

Ordering Information	TYPE EV-0160	
	50 Hz	60 Hz
F version (< 0,5 mbar) Three phase motor 400V, 50Hz (IEC) 400V, 60Hz (IEC)	108.001	108.002
Other Voltages/Frequencies	Upon request	
Filling with special oil	Upon request	
Exhaust filter cartridge	43120A	
Gasket set	32490	
Maintenance kit	32500	
Pump module	32900	
Inlet dust filter, paper cartridge	50800	

TYPE EV-0175



Pumping speed curve



Dimensions	W	D	H	A	B	C	E	F	G	I	J	K	L	M	N	O	P
EV-0175	1012	521	422	145	440	284	360	3x M8	420	310	G 2"	60	27	G 2"	225	550	462

TYPE EV-0175

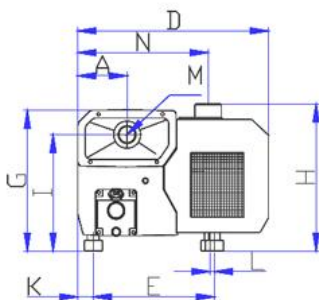
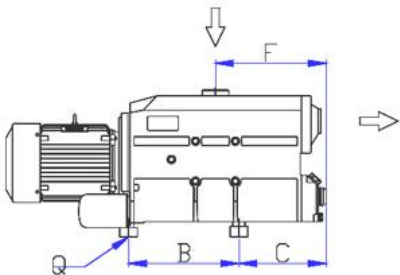
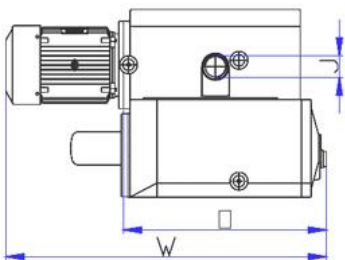
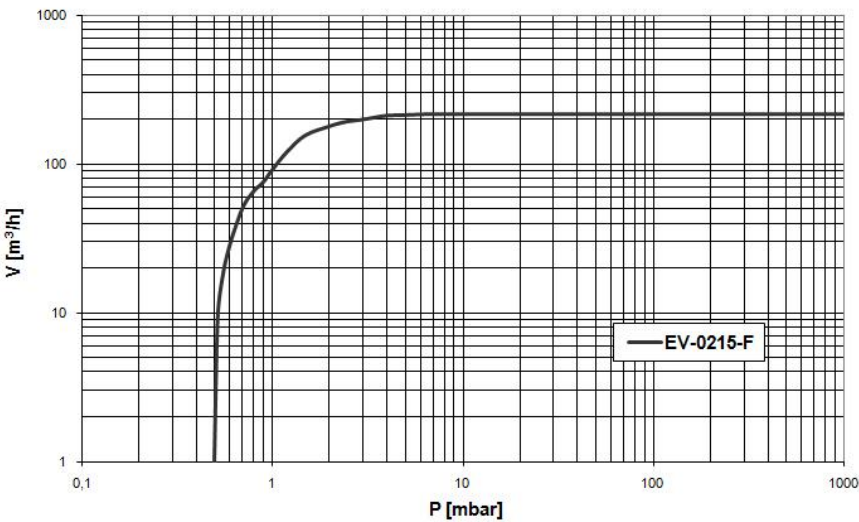
Technical Data		TYPE EV-0175	
		50 Hz	60 Hz
Nominal displacement	m ³ /h	175	210
Ultimate pressure F type	mbar	< 0,5	< 0,5
Motor power	kW	5,5	5,5
Nominal speed	rpm	1450	1740
Noise level	dB(A)	74	77
Operating temperature	°C	85	85
Water vapor tolerance	mbar	40	40
Water vapor capacity	l/h	3,0	3,6
Oil capacity	ltr	7	7
Weight	kg	164	164
Admissible ambient temp.	°C	10 to 40	10 to 40
Connection Inlet	G(BSP)	2"	2"
Outlet	G(BSP)	2"	2"

Ordering Information		TYPE EV-0175	
		50 Hz	60 Hz
F version (< 0,5 mbar)			
Three phase motor			
400V, 50Hz (IEC)		109.001	
400V, 60Hz (IEC)			109.002
Other Voltages/Frequencies		Upon request	
Filling with special oil		Upon request	
Exhaust filter cartridge		50120A	
Gasket set		50490	
Maintenance kit		35500	
Pump module		35900	
Inlet dust filter, paper cartridge		50800	

TYPE EV-0215



Pumping speed curve



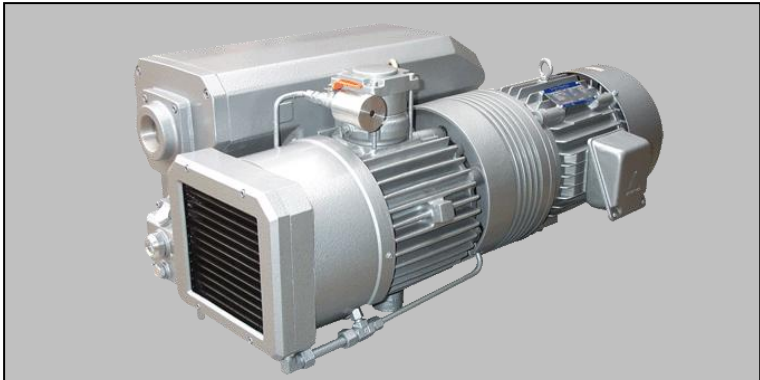
Dimensions	W	D	H	A	B	C	E	F	G	I	J	K	L	M	N	O	Q
EV-0215	895	535	413	138	304	245	340	311	395	325	G 2"	43	12	G 1¼"	365	570	3x M10

TYPE EV-0215

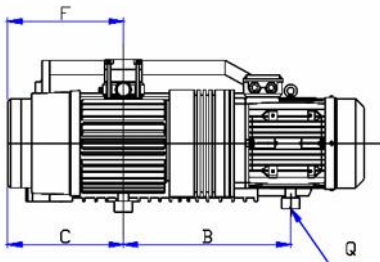
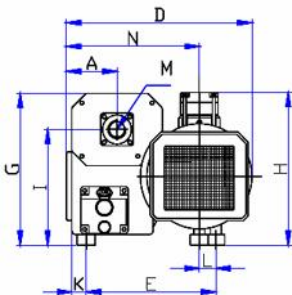
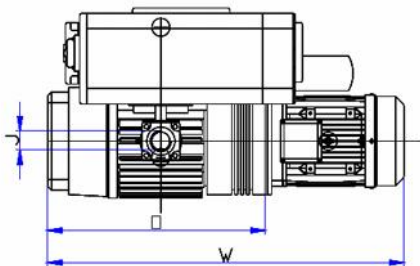
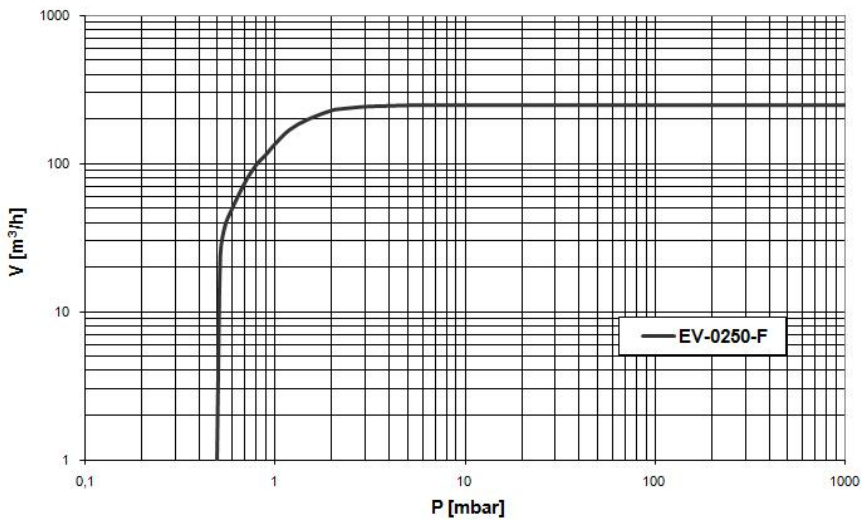
Technical Data		TYPE EV-0215	
		50 Hz	60 Hz
Nominal displacement	m ³ /h	215	258
Ultimate pressure F type	mbar	< 0,5	< 0,5
Motor power	kW	5,5	5,5
Nominal speed	rpm	1450	1740
Noise level	dB(A)	74	77
Operating temperature	°C	85	85
Water vapor tolerance	mbar	40	40
Water vapor capacity	l/h	4,0	4,5
Oil capacity	ltr	7	7
Weight	kg	145	145
Admissible ambient temp.	°C	10 to 40	10 to 40
Connection Inlet	G(BSP)	2"	2"
Outlet	G(BSP)	1½"	1½"

Ordering Information		TYPE EV-0215	
		50 Hz	60 Hz
F version (< 0,5 mbar) Three phase motor 400V, 50Hz (IEC) 400V, 60Hz (IEC)		110.001	110.002
Other Voltages/Frequencies		Upon request	
Filling with special oil		Upon request	
Exhaust filter cartridge		43120A	
Gasket set		43490	
Maintenance kit		43500	
Pump module		43900	
Inlet dust filter, paper cartridge		50800	

TYPE EV-0250



Pumping speed curve



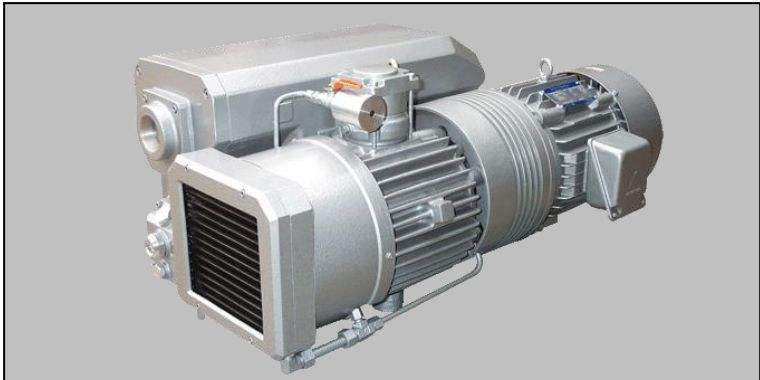
Dimensions	W	D	H	A	B	C	E	F	G	I	J	K	L	M	N	O	Q
EV-0250	1000	555	410	145	455	325	360	325	415	320	G 2"	55	29	G 1½"	380	610	3x M10

TYPE EV-0250

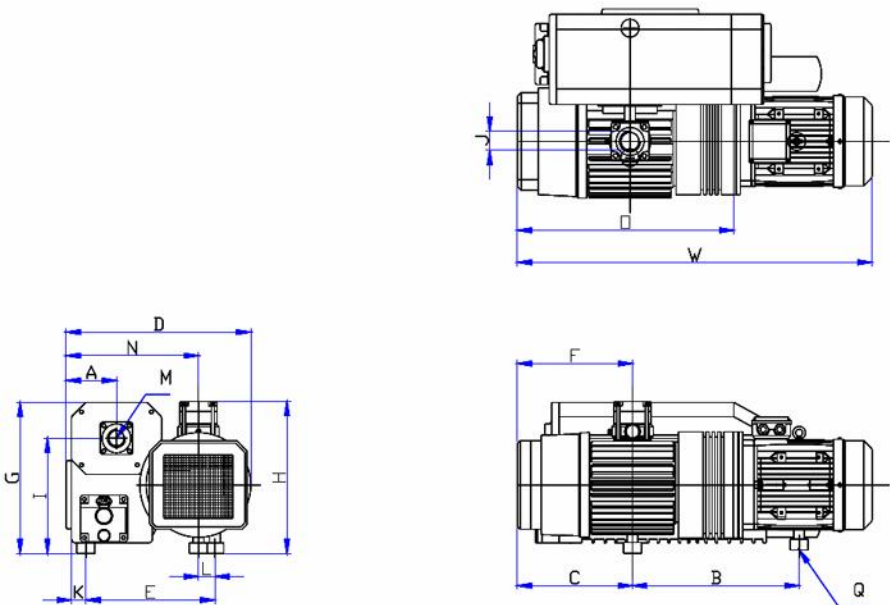
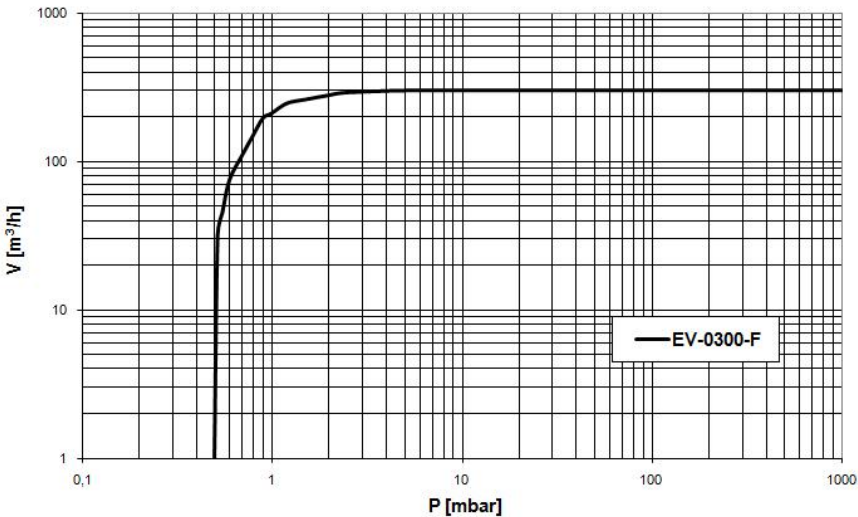
Technical Data		TYPE EV-0250	
		50 Hz	60 Hz
Nominal displacement	m ³ /h	250	300
Ultimate pressure F type	mbar	< 0,5	< 0,5
Motor power	kW	5,5/7,5	7,5
Nominal speed	rpm	1450	1740
Noise level	dB(A)	74	77
Operating temperature	°C	85	85
Water vapor tolerance	mbar	40	40
Water vapor capacity	l/h	4,5	5,0
Oil capacity	ltr	7	7
Weight	kg	184	184
Admissible ambient temp.	°C	10 to 40	10 to 40
Connection Inlet	G(BSP)	2"	2"
Outlet	G(BSP)	2"	2"

Ordering Information		TYPE EV-0250	
		50 Hz	60 Hz
F version (< 0,5 mbar) Three phase motor 7,5 kW 400V, 50Hz (IEC) 400V, 60Hz (IEC)		111.001	111.002
F version (< 0,5 mbar) Three phase motor 5,5 kW 400V, 50Hz (IEC)		111.101	Upon request
Other Voltages/Frequencies		Upon request	
Filling with special oil		Upon request	
Exhaust filter cartridge		50120A	
Gasket set		50490	
Maintenance kit		50500	
Pump module		50900	
Inlet dust filter, paper cartridge		50800	

TYPE EV-0300



Pumping speed curve



Dimensions	W	D	H	A	B	C	E	F	G	I	J	K	L	M	N	O	Q
EV-0300	1000	555	410	145	455	325	360	325	415	320	G 2"	55	29	G 1½"	380	610	3x M10

TYPE EV-0300

Technical Data		TYPE EV-0300	
		50 Hz	60 Hz
Nominal displacement	m ³ /h	300	360
Ultimate pressure F type	mbar	< 0,5	< 0,5
Motor power	kW	5,5/7,5	8,6
Nominal speed	rpm	1450	1740
Noise level	dB(A)	75	78
Operating temperature	°C	85	85
Water vapor tolerance	mbar	40	40
Water vapor capacity	l/h	5,0	5,8
Oil capacity	ltr	7	7
Weight	kg	188	188
Admissible ambient temp.	°C	10 to 40	10 to 40
Connection Inlet	G(BSP)	2"	2"
Outlet	G(BSP)	2"	2"

Ordering Information		TYPE EV-0300	
		50 Hz	60 Hz
F version (0,5 mbar) Three phase motor 400V, 50Hz (IEC) 400V, 60Hz (IEC)		112.001	112.002
F version (< 0,5 mbar) Three phase motor 5,5 kW 400V, 50Hz (IEC)		112.101	Upon request
Other Voltages/Frequencies		Upon request	
Filling with special oil		Upon request	
Exhaust filter cartridge		50120A	
Gasket set		50490	
Maintenance kit		50500	
Pump module		50900	
Inlet dust filter, paper cartridge		50800	

Parts & Accessories



Oil Heater

Oil Cooler

The EV-series vacuum pumps can be equipped with a Oil Heater or Oil Cooling systems.

Oil Heater:

The Oil Heater will be used to warm up the oil before starting the pump in situations where the ambient temperature is below 5°C or to heat the oil around the 75°C to discharge moistures coming into the pump effectively from the start of the pump. The Oil Level Switch will be required for protection against overheating caused by too low oil levels.

It can be installed on the service covers of all pumps from EV-0030 till EV-0750.

Oil Cooler:

The Oil Cooler will be used in situations where the ambient temperature is more than 40°C or when the pump operation temperatures is higher caused by high temperatures of the incoming gasses into the pump. The ball valve on the outlet of the water line can be used set the flow of cooling water to provide appropriate cooling.

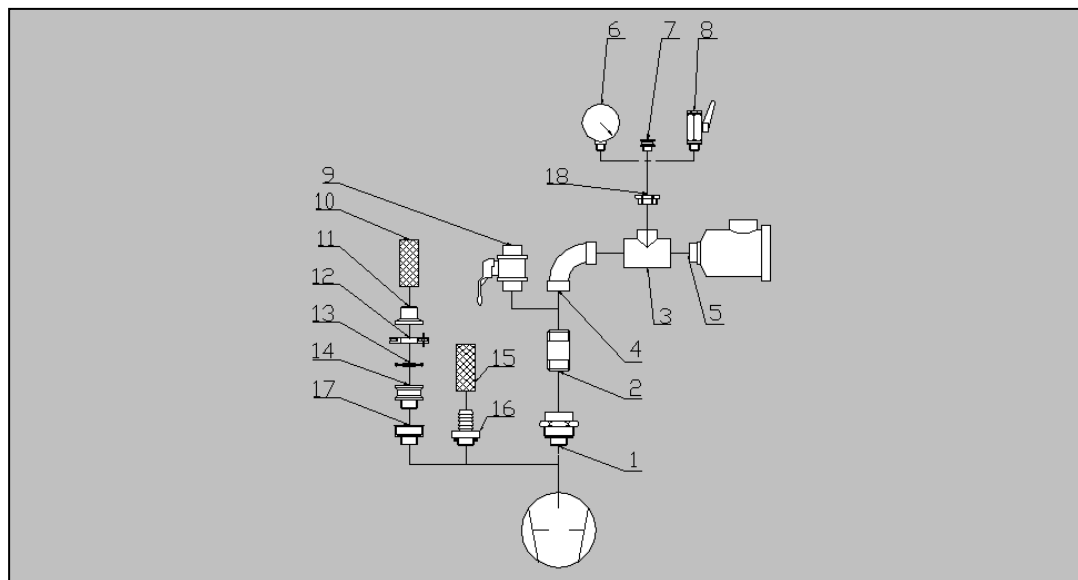
It can be installed on the pumps from EV-0160 till EV-0750.

Technical Data		Oil Heater
Supply Power		230V, 50Hz
Power EV-0030 to 0100	kW	1,0
Power EV-0160 to 0300	kW	2,0
Power EV-0450 to 0750	kW	4,0
Length outside housing	mm	140
Diameter housing	mm	90

Ordering Information	Parts & Accessories
Oil Heater EV-0030 to 0100	119.914
Oil Heater EV-0160 to 0300	119.915
Oil Heater EV-0450 to 0750	119.916
Oil Cooler EV-0160 to 0750	119.913

EV Series accessories

Connection fittings for EV-0160, EV-0175, EV-0215, EV-0250, EV-0300



Item	Description	Connection	Ordering No.
1	Rotatable flange	2"M-2"F	119.201
2	Adapter piece	2"M-2"M	119.202
3	T-piece	2"F-2"F-2"F	119.203
4	Elbow	2"F-2"F	119.204
4a	Elbow	2"F-2"M	119.205
5	Inlet dust filter, paper cartridge	2"M-2"F	50.800
6	Manometer 0 to -1 bar	½"M	119.006
7	KF Adapter	½"M-DN16KF	211.367
8	Ball valve	½"M-½"F	119.007
9	Ball valve	2"F-2"F	119.208
10	Flexible hose	40mm	119.209
11	Hose connection	DN40KF-40mm	211.404
12	Clamping ring	DN40KF	211.004
13	Centering ring	DN40KF	211.063
14	KF Adapter	1½"M-DN40KF	211.369
15	Flexible hose	50mm	119.210
16	Hose connection	2"M-50mm	119.211
17	Adapter piece	2"M-1½"F	119.212
18	Adapter piece	2"M-½"F	119.213

EV Inlet Dust Filters

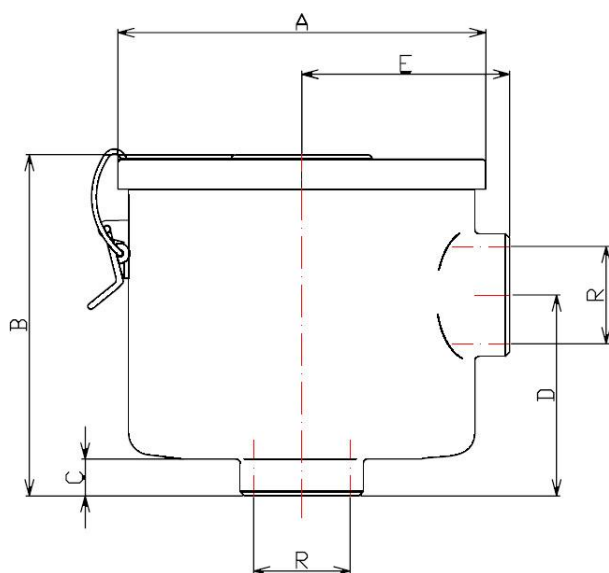


These dust filters can be mounted on the intake side of the EV-Series vacuum pumps to protect the pump against: dust, powders, chips, etc.

The filters consists of a steel housing with a lit and quick locking clamps.

Quick changing of cartridges is possible and the filters have a high separation ratio.

The housings are suitable to be fitted with four different kind of filters:



Type	Dimensions in mm						Weight kg
	øR	øA	B	C	D	E	
02.800	G ½"	80	60	12	39	45	0,6
20.800	G 1¼"	170	141	17	93	96	1,8
50.800	G 2"	200	240	18	124	114	3,8
120.800	G 3"	270	180	50	145	165	12,5

Paper cartridge

Separates particles down to 1 µm. Specially suitable for dry processes. We use this filter as standard.

Polyester cartridge

Separates particles down to 1 µm. Specially suitable for moist processes.

Metal cartridge

Separates particles down to 0,08 mm, like pieces of: plastic, paper, food, etc

Activated charcoal cartridge

Absorbs vapours of high molecular weight, like: acid and solvent vapours, alkaline solutions, etc.

Dust Filter	Housing with paper cartridge	Paper cartridge	Polyester cartridge	Metal cartridge	Activated charcoal cartridge
G ½"	02.800	02.8001	02.8101	02.8201	02.8301
G 1¼"	20.800	20.8001	20.8101	20.8201	20.8301
G 2"	50.800	50.8001	50.8101	50.8201	50.8301
G 3"	120.800	120.8001	120.8101	120.8201	120.8301

Vacuum Gauge with memory

EV Vacuum Gauge with memory



Supplied items

System comes in box

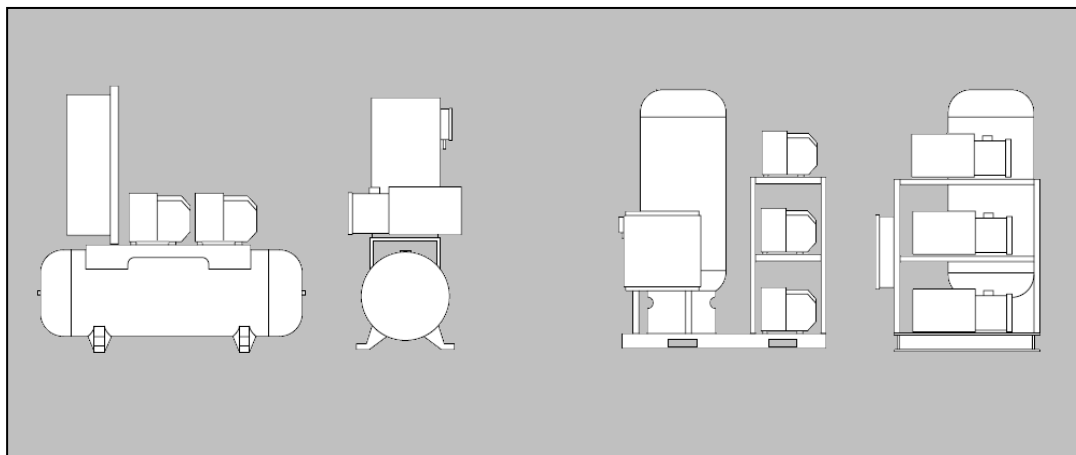
The EV Vacuum Gauge with memory solves many problems of vacuum measurements in the production factories and laboratories. The Gauge can be packed inside film or bag of thermoforming and vacuum chamber machines during daily production. It doesn't require stop of production during measurement and allow to verify the well-closing bags and others, thanks to "test" function which measures 99 different vacuum measurements, choosing from 1 to 59 minutes are possible. It stores the values inside its memory and it is possible to read this memory via the USB cable to your computer by using our available software.

Technical Data		Vacuum Gauge with memory	
		1000 to 1 mbar	100 to 0,1 mbar
Dimensions	mm	120x65x25	
Display		4 digit LCD	
Weight	gram	about 300	
Measurement range	mbar	1.000 till 1	100 till 0,1
Max. pressure (failure point)	bar	2	
Temperature	°C	5 to 50	
Accuracy	mbar	± 1	± 0,1
Charge voltage		230 V AC / USB / 5V	
Battery working time		30 hours (rechargeable)	
Application		air and non corrosive gas	
Protection		IP 65	

Ordering Information		Vacuum Gauge with memory	
		1000 to 1 mbar	100 to 0,1 mbar
Complete set of gauge in box		119.900	119.901
Software for computer memory readout		119.902	
16 KF flange to fit the gauge		119.903	

EV Central Vacuum Systems

EV Central Vacuum Systems for use in factories and hospitals



Double system, 2 pumps

Double systems are commonly used in the Industry and offer the advantage of supplying a continuous vacuum more economical than a number of small vacuum units. It also compensates large vacuum variations in the number of vacuum consumers.

Triple system, 3 pumps

Triple systems are commonly used in hospitals and offer the same advantages as the double system. The third pump also offers an extra safety factor for when one of the pumps is switched off by an error or for service purpose. This way there is always a vacuum present, systems are according to DIN EN 737-3

We also have Single systems, 1 pump, available for small systems that need a buffer tank.

At request we will design a special system that meet your requirements.

The following extra options are available from us:

- Dust filters
- Bacterial filters and residue condensate traps
- Pneumatic or electromagnetic blocking valves
- Mobile systems build on wheels
- Stainless steel buffer tank
- Stainless steel piping
- Connections to buildings central control room

The systems are supplied as full assembled and tested, so they are Plug & Play. On your request we can also offer onsite installation and take care of removing your old system when needed.